

Item no. 2444



Bluetooth Wireless Handsfree Car Kit



User's Manual

Bluetooth Wireless Handsfree Car Kit By Wagan Tech

Thank you for purchasing the **Bluetooth Wireless Handsfree Car Kit** by Wagan Tech. With normal care and proper treatment it will provide years of reliable service. Please read all operating instructions carefully before using this product.

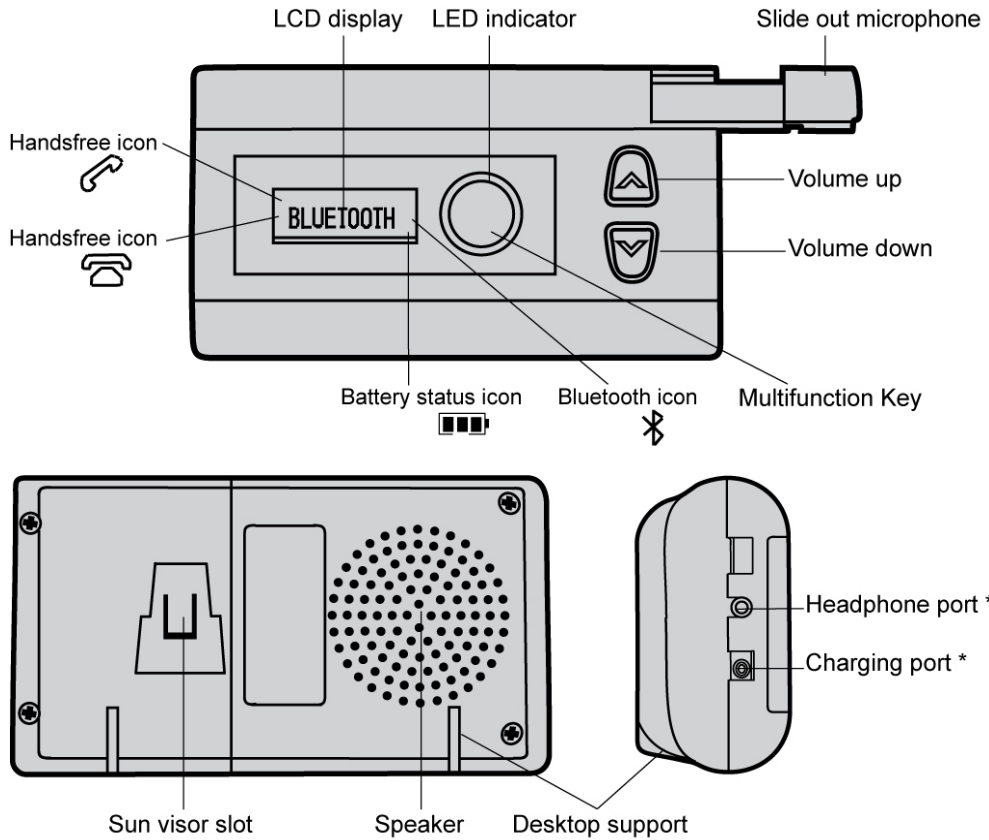
Product Description

- The BLUETOOTH WIRELESS HANDSFREE CAR KIT consists of a rechargeable speakerphone which is easy to operate in a car, and portable to use anywhere. It is specially designed for connecting Bluetooth compatible mobile phones without wires in car.
- You can enjoy the freedom of wireless communication, even if your car engine is turned on or off. No power connection or connection to the mobile phone is required to use this unit.
- Using the single-button control of the hands free, you can make and answer calls without touching the phone. The Unit works even if leave the phone in your pocket or anywhere inside the car.
- The built-in DSP circuit cancels and suppresses echo and background noise.
- This hands free car kit is specially designed for Bluetooth mobile phones or other Bluetooth compatible devices that support the Hands free or Headset profiles.

Note:

The Bluetooth wireless technology is a worldwide specification designed for, low power consumption, and short rang based in a low cost system. It provides links between mobile computers, mobile phones, other portable and handheld devices, as well as connectivity to the internet.

Bluetooth Wireless Handsfree Car Kit By Wagan Tech



Quick User Guide

Status	Operation	LED Indicator & Sound	LCD Display
Switch On	Simply slide the microphone across to the right from off mode.	Low to high 'do do' sound when turning on the unit. Blue flashing every 5 seconds, indicates in idle mode	HF009 > BLUETOOTH
Connect/Re connect (with paired phone)	In idle mode, press Multifunction Key once or select paired device 'HF009' on mobile phone, and then select 'Connect'.	Blue flashing every second indicates searching for paired devices If connected to mobile with Hands free Profile, blue always on indicates in standby mode	Connecting > BLUETOOTH > Display 📞 📶
Switch Off	Simply push the microphone back	LED indicator goes off	-
Pairing(for the first time using the handsfree)	<ol style="list-style-type: none"> 1. Switch on the hands free. 2. Enable Bluetooth feature of the mobile phone. 3. In the Bluetooth menu, select 'add device' or 'search device'. 4. 'HF009' appears in the device list, press 'yes'. 5. Enter fixed pass key '8888'. Pairing completes. 6. Edit the device name if you would like to personalize it. 	Flashes blue every 5 seconds, indicates in idle mode If connected with Hands free Profile, blue always on indicates in standby mode.	Mobile phone model name > Connecting > BLUETOOTH
Receive Call	When hands free is ringing, press Multifunction Key once	-	Call number > Active Call
Reject Call	When hands free is ringing, press Multifunction Key twice	-	BLUETOOTH
End Call	During a call, press Multifunction Key once.	-	BLUETOOTH

Bluetooth Wireless Handsfree Car Kit By Wagan Tech

Status	Operation	LED Indicator & Sound	LCD Display
Transfer to phone	During a call, press & hold Multifunction Key for 3 seconds. To transfer back, press once again.	-	BLUETOOTH
Switch to/ from waiting call	During a call, when another call dials in: 1. Reject the incoming call if no any operation in 8 seconds. 2. Reject the incoming call if double clicks Multifunction Key. 3. To receive the incoming call and end the active call, click Multifunction Key once. 4. To switch to the incoming call, press & hold Multifunction Key for 2 seconds. To switch back, press & hold for 2 seconds again.	'do' sound	Caller number > Call Hold
Redial last number	In standby mode, press Multi-function Key twice.	-	Redial
Voice dial	In standby mode, press Multi-function Key once.	A tone from the hands-free indicates the phone is ready to receive voice tag.	Voice Call > Dialing
Mute microphone	During a call, click together '+' and '-' buttons once. Click again for unmute.	'do' sound. (You can still hear the other side.)	MUTE MIC / UNMUTE MIC
Adjust Volume	Click '+' or '-' button to control the volume up or down.	-	VOL
Privacy call	Connect external headphone to headphone port.	-	-
Disconnect with mobile	Press & hold '+' for 2 seconds. To reconnect to phone, click Multifunction Key once	-	BLUETOOTH
Low battery	-	Red & Blue flashes and 'do' sound	Low Battery
Charging	Connect to charger	Constantly red on	Charging
Charging completed	Within 3 hours	Stops red	BLUETOOTH

Getting Started

For the first time using the hands free, please:

- Charge hands free with the provided charger for 3 hours.
- Ensure a Bluetooth function supporting mobile phone is ready for pairing.

Charging

Charge with saver charger (cigarette light adaptor) Switch on the hands free. Connect the saver charger to the in car cigarette socket, and then to the charging port of the handsfree. LED indicator constantly red on

Notes:

- Maximum charging time: 3 hours
- Red LED indicator shuts off when fully charged
- Talking time: up to 13 hours
- Standby time: up to 220 hours
- Low battery signal: LED indicator fl ashes blue & red, 'do' sound until hands free is recharged.
- Do not charge up to 24 hours.

Switch On / Off

Switch on hands free

Simply slide out microphone across to the right from off mode; you will hear a low to high 'dodo' sound and LED indicator flashes blue.

Switch off hands free

Simply push microphone back, LED indicator then goes off.

Pairing with a phone

Before using the hands free, you must pair it with the mobile phone first. Once the hands free and the phone have paired they store each other's ID. Therefore, they can connect to each other automatically. You can check, delete or rename the paired device in the devices list of the mobile phone.

1. Place the Bluetooth hands free and your Bluetooth mobile phone within a distance of 1 meter.
2. Switch on your Bluetooth mobile phone and enable the Bluetooth feature.

** If the phone has 'Profile' options, you are recommended to select 'Hands free Profile' rather than 'Headset Profile.'*

3. Turn on the hands free. The LED indicator will flash blue every 5 seconds to indicate it is in idle mode.
4. On your Bluetooth mobile phone, when searching for device, **'HF009'** will appear in the device list.
5. Select device **'HF009'** and enter fixed pass key **'8888'**. Pairing completed. The LED indicator turns blue steadily indicates the hands free is connected to the phone with Hands free Profile
6. Make sure the paired mobile has returned to main menu.
7. The volume is automatically set to middle level. For best performance, press '+' or '-' to adjust a suitable volume level.

Check if the mobile displays any messages or icons which indicate the connecting status. After the pairing is completed, some phones automatically connect to hands free immediately. Some phones keep waiting for manual connection. In this case, press Multifunction Key once, BTHF009D Plus will connect to the phone. Or you can select 'HF009' from the "Paired Device" of the phone. The phone will connect to the hands free. Please refer to your phone's user manual.

You should now be able to make wireless communication with the hands free. Keep the distance between the hands free and the mobile within 10 meters and free from obstacles. You can dial and receive calls by the phone, or activate the voice dialing, redial the last number and receive calls through the hands free.

Bluetooth Wireless Handsfree Car Kit By Wagan Tech

** 'Hands free Profile' supports 'Caller ID display', 'Voice dial', 'Redial the last number', 'Call waiting' and 'Call transfer' functions. If the mobile phone only supports 'Headset Profile', those functions are not available.*

Connect / Reconnect to your phone

After the hands free is turned on, it is in idle mode. It is waiting to be paired or connected to your Bluetooth mobile phone. The LED indicator flashes blue every 5 seconds indicating this mode. When the hands free and the cell phone are disconnected, the hands free will return back to idle mode.

To connect with phone

EITHER

To connect with paired phone or reconnect with previously connected phone, click Multifunction Key once. The hands free will search and connect to the nearest phone automatically. (The LED indicator flashes blue every second indicating the searching mode. The searching may last for 1/2 minute. If no phone can be found, the hands free will return to idle mode.)

OR

To connect with the hands free through the phone, in the setting menu of the phone, select 'HF009' from 'Paired Device'. Select 'connect' and the phone will connect to the hands free.

Hands free Functions

Receive call	When hands free is ringing, the LCD displays the calling number. Press Multifunction Key once to receive the call and 'Active Call' will be displayed.
Reject call	When hands free is ringing, the LCD displays the calling number. Press Multifunction Key twice to reject the call and 'BLUETOOTH' will be displayed.
End call	During a call, press Multifunction Key once. LCD displays 'BLUETOOTH'.
Switch to/from waiting call(call waiting)	When a second call dials in during the call, the LCD displays the second calling number. 1. The incoming call will be rejected if no action is taken after 8 seconds. 2. You can also reject the incoming call by double clicking the

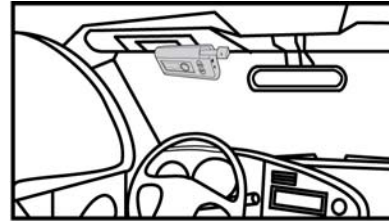
Bluetooth Wireless Handsfree Car Kit By Wagan Tech

	<p>Multifunction Key.</p> <p>3. To receive the incoming call and end the active call, click the Multifunction Key once.</p> <p>4. To switch to the incoming call, press & hold the Multifunction Key for 2 seconds. The LCD screen will display 'Call Hold'.</p> <p>5. To switch back to the call on hold, press & hold the Multifunction Key for 2 seconds again.</p>
Transfer call from hands free to the phone	During a call, press & hold Multifunction Key for 5 seconds. LCD displays 'BLUETOOTH'. To transfer back to the device, press and hold once again.
Redial the last number	In standby mode, press Multifunction Key twice. The last number will be redialed. LCD displays 'Dialing'.
Voice dial	<p>In standby mode, press Multifunction Key once. The LCD will display 'Voice Call.' You will hear a tone from the hands free. It indicates the mobile phone is ready to receive voice tag. Speak the name of the person you wish to call. Then the mobile starts the voice dial automatically.</p> <p><i>(Ensure the mobile phone supports Voice Control Dialing before use.)</i></p>
Mute microphone	To temporarily mute the microphone, click together the volume '^' or 'v' buttons once. You will hear a 'do' sound. This will allow you to hear the other side but the other side does not hear you. Press '^' or 'v' again to un-mute.
Adjust volume	Press '^' or 'v' buttons to control volume up or down. LCD displays the volume level.
Privacy call	Connect external headphone to the hands free device. This will allow you to hear the other side but the other people inside the car will not be able to hear.
Disconnect with mobile	In standby mode, press & hold the '^' for 2 seconds. This function is for connecting the hands free to another mobile. LCD displays 'BLUETOOTH'. To reconnect to the phone, click the Multifunction Key once

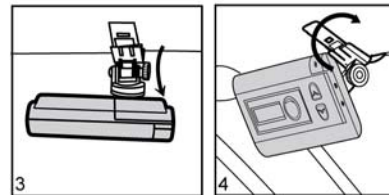
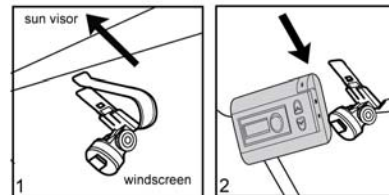
* The Functions 'Caller ID display', 'Redial the last number,' 'Call waiting' and 'Call transfer' are supported by Hands free Profile instead of Headset Profile. For using those functions, please check if the mobile phone supports Hands free Profile.

* The Function 'Volume Level Display' is available if the phone supports 'Remote Volume Control.'

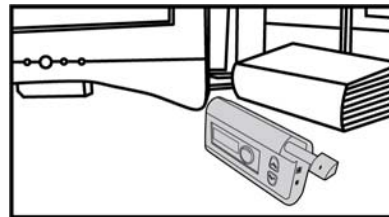
In- Car Use



1. Inside the car, clip the provided bracket to the sun visor as shown.
2. Fit the hands free on the bracket.
3. To flip the hands free up or down, slack the screw of the bracket gently.
4. After the hands free has adjusted to a comfortable view angle facing you, lock the screw.
5. Slide out microphone to switch on. For the best performance, extend the microphone fully.



Office or Home Use



1. Put the hands free on the desktop.
2. Put it on a flat surface.
3. Slide out microphone to switch on. For the best performance, extend the microphone fully.

Care and Maintenance

- Check the laws and regulations on the use of mobile phones and hands free equipment in the area where you drive.

- Always give full attention to driving. In some areas, you are required to pull off the road and park before making or answering a call.
- Do not expose the hands free to extreme temperatures or direct sunlight.
- Do not expose it to moisture or humidity. Keep it away from any liquid or chemicals.
- Do not keep the device in dusty or dirty areas. Only use a soft damp cloth to clean it.
- Do not attempt to disassemble the hands free and the chargers.
- Do not try to replace the rechargeable battery inside the hands free.
- Charge the hands free only with the supplied charger.
- Travel charger can only be used indoor under normal temperature and humidity.

Specification

Bluetooth Specification	: Version 2.0 compliant
Bluetooth Profile Supported	: Headset and Hands free Profiles
Frequency Range	: 2.4 GHz spectrum
Working Distance Range	: 10 Meters (class 2)
Dimensions (main unit)	: 110 (L) x 61 (W) x 32 (T) mm
Weight (main unit)	: 133 g
LCD Display	: 12 digits caller number display, battery status icon, blue backlight.
DSP	: Full duplex transmission, noise suppression and echo cancellation.
Pairing	: Memorize up to 4 mobile phones simultaneously.
Charging Time	: Within 3 hours
Talking Time	: Up to 13 hours
Standby Time	: Up to 220 hours
Rechargeable Battery	: Lithium-ion, 3.6V, 1000 mAh installed
Battery Protection	: Over charge and over discharge protection
Input Current	: 350 mA (internal controlled)
Input Voltage	: DC 5V
Speaker Power	: 2W (max)
Speaker Impedance	: 8 ohm
Sensitivity of Microphone	: -47dB1

Bluetooth Wireless Handsfree Car Kit By Wagan Tech

WAGAN Corp. Limited Warranty Registration Form

All WAGAN Corporation products are warranted to the original purchaser of this product.
Warranty Duration: This product is warranted to the original purchaser for a period of one (1) Year from the original purchase date, to be free of defects in material and workmanship. WAGAN Corporation disclaims any liability for consequential damages. In no event will WAGAN Corporation be responsible for any amount of damages beyond the amount paid for the product at retail. In the event of a defective item, please ship the item, prepaid, with a complete explanation of the problem, your name, address and daytime phone number. WAGAN Corporation will, at its option, replace or repair the defective part. This warranty is void if the product has been damaged by accident, in shipment, unreasonable use, misuse, neglect, improper service, commercial use, repairs by unauthorized personnel or other causes not arising out of defects in materials or workmanship. This warranty is effective only if the product is purchased and operated in the USA and Canada and does not extend to any units which have been used in violation of written instructions furnished.
Warranty Disclaimers: This warranty is in-lieu of all warranties expressed or implied and no representative or person is authorized to assume any other liability in connection with the sale of our products. There shall be no claims for defects or failure of performance or product failure under any theory of tort, contract or commercial law including, but not limited to negligence, gross negligence, strict liability, breach of warranty and breach of contract.
Warranty Performance: During the above one (1) Year warranty period, a product with a defect will be replaced with a comparable model when the product is returned to WAGAN Corporation with an original store receipt. The replacement product will be in warranty for the balance of the one (1) Year warranty period.

- Please activate my limited warranty for WAGAN Corp.
- Enclosed copy of original sales receipt.

Name			
Mail Address			
Add'l Address			
City	State	Zip Code	
Item Purchased			
Store Name			
Date of Purchase			
Signature			Date

All WAGAN Corporation Products must be registered within (30) days of purchased to activate this warranty.

Mail the complete registration form, along with a copy of the original receipt to:

Attn: Customer Service
 WAGAN Corporation
 3589 Yale Way, Fremont, CA 94538
 Email: customerservice@wagan.com
 Phone: (Toll Free) 1-800-231-5806 (Local) 1-510-490-9221
 Hours of Operation: Monday through Friday 8:00 A.M. - 5:00 P.M. (P.S.T.)